



CDS

***A Collaborative Solution to
Developmental Delays***



Center for
Developmental
Services™



Integrated Service Model

Question: *How would you tackle Asthma, Obesity, or Teen Pregnancy?*

Answer: *By approaching it from every angle. This includes the person's environment, lifestyle, education, and health care.*

- Not just the responsibility of the health systems.
- Brainstorming power of the community.
- Shared cost models.
- Communication, not duplication.

THE CDS STORY



THE ORIGINAL BUILDING



Owned by the First Presbyterian Church of Greenville, this 35,000 sq' warehouse would be transformed after a \$4.5 million renovation.



Our Doors Open Many More



The Center for Developmental Services exists to make the care of children with special needs easier and more effective, by uniting specialized service providers in one location



 ***THE CDS PARTNERSHIP***

Think of the word “synergy”, where the combined partnership produces a greater result than the sum of each organization operating independently.





CHILDREN SERVED

*The CDS Partnership serves
6,000 children each year with special
needs or developmental delays.*

- Autism
 - Down Syndrome
 - Genetic Disorders
 - ADHD
 - Spina Bifida
 - Cerebral Palsy
 - Hearing/Speech Evaluation
-

1 in 5 children has some form of delay.



FAMILY PROGRAMS

- *Educational Seminars*
- *Homework Help*
- *Special Events*
- *Spanish Interpretation*
- *Health Fairs*
- *Computer Center*
- *Playground*
- *Holiday Activities*



PARTNER BENEFITS

- *Outreach in the Community*
- *Marketing Material and Social Media*
- *Lunch & Learns*
- *Facility Management*
- *Collaborative Fundraising*



POPULATION SERVED

ANDERSON

PICKENS

GREENVILLE

SPARTANBURG

LAURENS

OTHER

5%

9%

68%

10%

3%

5%

BY AGE

63%

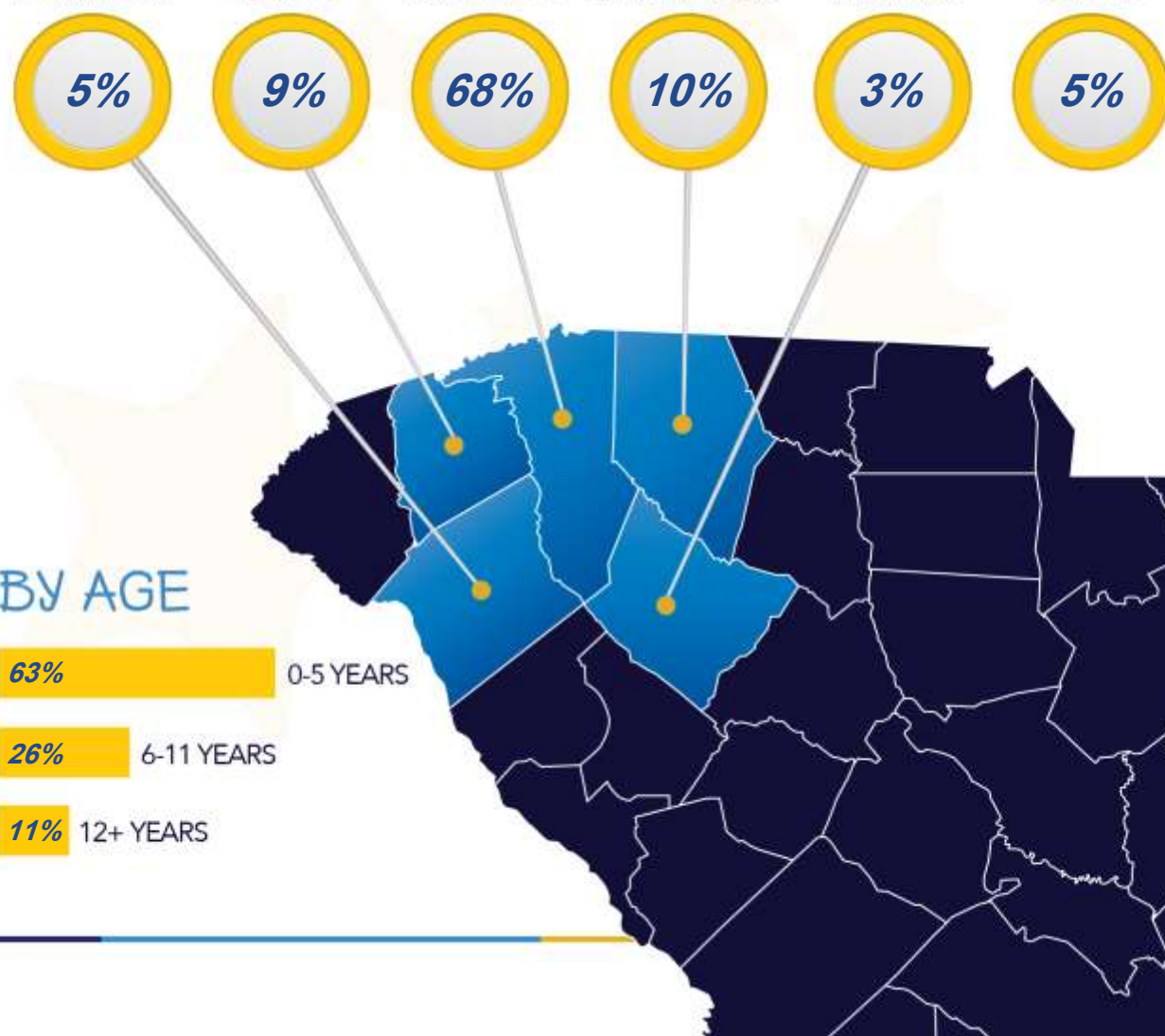
0-5 YEARS

26%

6-11 YEARS

11%

12+ YEARS





VOLUNTEER ENGAGEMENT

*In 2015, we had **291** volunteers donate over **929** hours for children with disabilities and developmental delays.*



*This helps our community embrace **inclusion** and enhance **compassion**.*



LOOKING AHEAD

- *Medical-Legal Partnership* – A new service offered to CDS families that will give them access to a civil lawyer for things like landlord/tenant issues; child support; and integrating a lawyer into a child's medical complexities to improve overall health and well being.
- *Space utilization* – an update and economical use of space within the building to allow for growth in the Wonder Center.
- *Case Management* – Add this direct service to help organizations become compliant with new state mandate of conflict-free case management.

GOAL: COMMUNICATE, NOT DUPLICATE